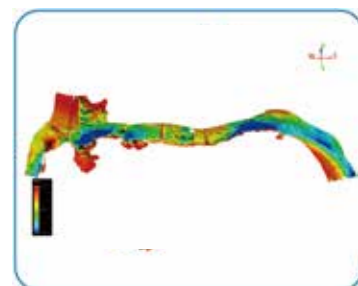


SYSTEM EXTENSION

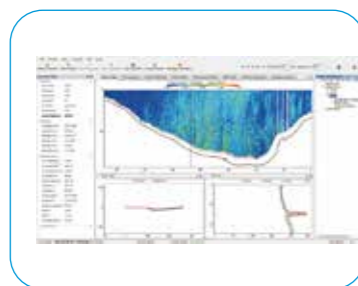
Multiple applications, available for single beam echo sounder, ADCP and side scan sonar.



APPLICATIONS



Bathymetry



Current Measure



SAR & Investigation

TECHNICAL SPECIFICATIONS

| | | |
|--|-------------------------|--|
| Hull Parameters | Dimensions | 1100mm*575mm*380mm |
| | Weight of base boat | 6kg (without battery) |
| | Hull material | Kevlar & carbon fiber high-strength composite |
| | Hull design | Heavy duty trimaran, low barycenter, low resistance, stable sailing |
| | Anti-wave&wind | 3rd wind level and 2nd wave level |
| Power and Electrical Parameters | Battery endurance | 4h with 2m/s (The battery pack can be added to improve the battery life) |
| | Maximum speed | 6 m/s |
| | Propulsion | Removable modular culvert propeller |
| | Propeller type | Brushless DC |
| | Direction control | Veering without steering engine and sailing reversely |
| Safety Guarantee | Camera | 360° PTZ camera |
| | Auto-return | Auto-return while low battery or signal loss |
| Intelligent Controller | System | Android |
| | Transmission range | 2.0 km (Optional 3.0 km) |
| | Water proof | IP67 |
| | Function | Real-time switching operation mode, control ship speed, steering and other functions, display the basic information |
| Sounding Performance | Work frequency | 200KHz |
| | Beam angle | 5°±0.5° |
| | Sounding range | 0.15m~200m |
| | Sounding accuracy | 1cm ± 0.1%h (h=depth), 1cm depth resolution |
| | Storage | Computer-based real-time storage |
| Positioning Accuracy | RTK | Horizontal: ±8mm + 1ppm RMS Vertical: ±15mm + 1ppm RMS |
| | SBAS | 0.5m CEP |
| System Software | Hull control system | Autopilot, hull parameter control, coordinate conversion , etc |
| | Hi-MAX sounder software | Supporting parameter configuration, coordinate conversion, depth location collecting, post-processing (simulative depth and digital depth combined for conveniently judging false depth), sampling feature point randomly, RTK and tide document for tide gauging, multiple data formats for result output , etc |



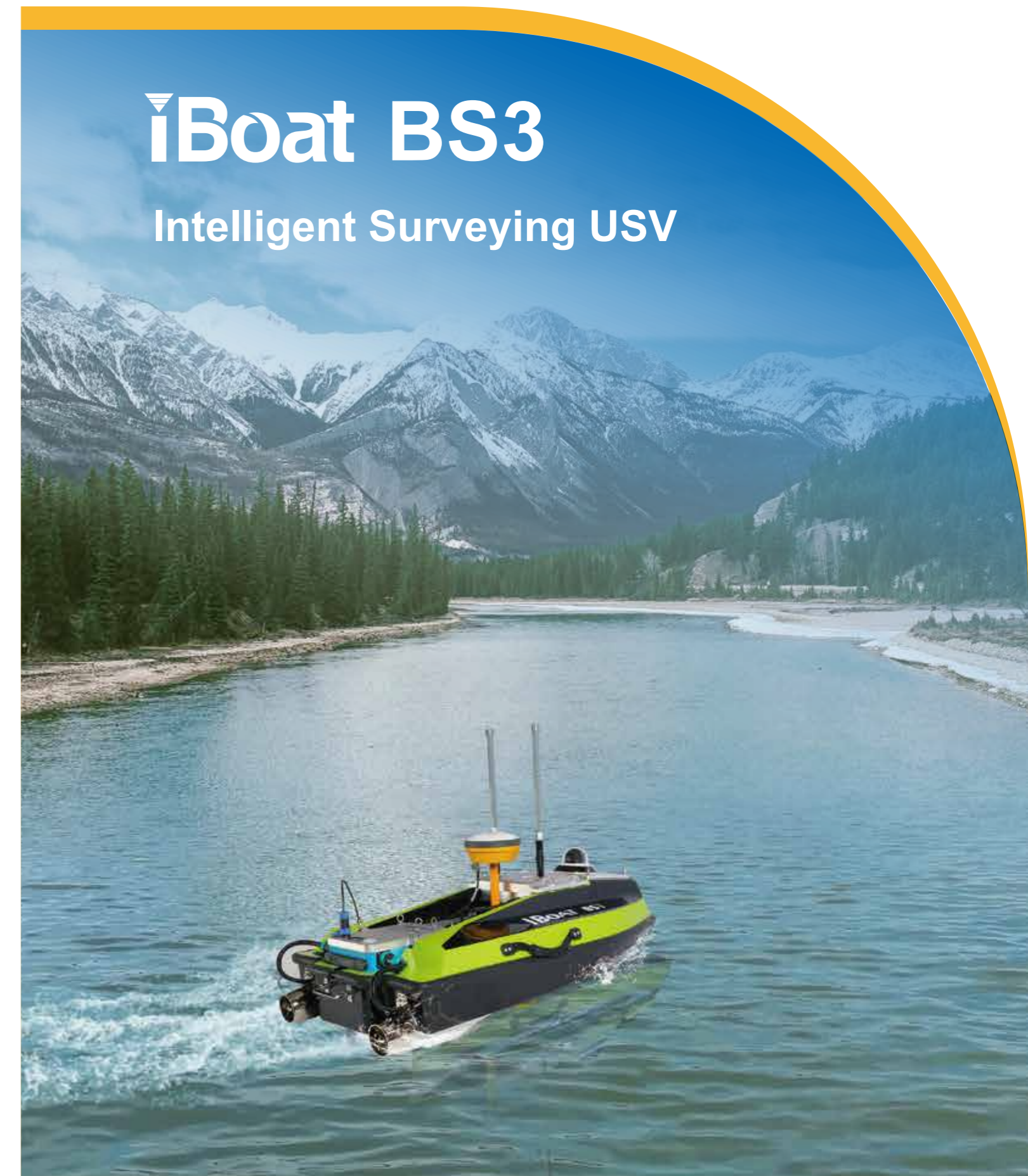
AUTHORIZED DISTRIBUTION PARTNER

23J130

Hi-Target Surveying Instrument Co., Ltd

ADD: Building 13, Tian'An Technology Zone HQ Center, No. 555, North of Panyu RD, Panyu District, 511400 Guangzhou, China.

www.hi-target.com.cn www.bd.hi-target.com.cn +86-20-28688296 info@hi-target.com.cn



iBoat BS3

Intelligent Surveying USV

SYSTEM INTRODUCTION

Hi-Target latest intelligent USV — iBoat BS3 is a swift, efficient and robust unmanned surface vessel, offering the portable, fast, secure and multi-functional service for hydrographic survey and all kinds of water-related applications in different environments like rivers, lakes, reservoirs, harbors and even torrents.



SYSTEM COMPOSITION AND FEATURES

Hull Structure

- Streamlined trimaran and low barycenter design to ensure low resistance and sailing stably
- Only 6kg weight
Small and portable hull convenient for transmission
Available placement in the car trunk
- Made of Kevlar & carbon fiber high-strength composite with strong resistance to impact



Power System



- Propellers are applied with culvert-design and protective shield outside to prevent aquatic plants and fishing net from twining.



- Innovate highly integrated modular design making the propellers easy to remove and change. Paralleled level with the boat and convenient for transmission and placement.

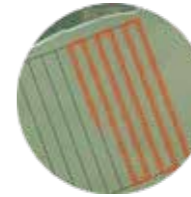


- Auto-return while low battery or signal loss.

Base System



- 7-inch touch screen and stable Android system of the controller bring you more convenient operation. The controller controls the boat and transmit data with the boat at the same time, the transmission distance is up to 2 km, no need to set up additional communication base. You can view the boat's sailing video on the controller.



- Supports automatic operation, automatic navigation, auto-return to fixed point and users can switch between manual and automatic mode at any time.

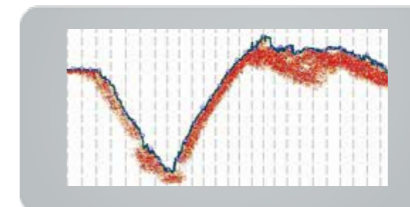
Hi-Target Sensors



- BS3 has built-in control module, communication module and bathymetry module. Overall stability is improved. Waterproof rating IP68.



- With Hi-Target high-accuracy GNSS RTK module or DGPS beacon module, the location device support GPS/GLONASS/Galileo/BDS location. Besides, iBoat BS3 is equipped with multiple communication modes, such as UHF radio, beacon and SBAS.



- HiMAX surveying software is available for collecting, guiding and post-processing. The simulative depth and digital depth are combined for conveniently judging true water depth.